

Courses Offered

Fall-Spring 2011-2012

- Resources for an Effective Music Program (Teacher: Stephen Williams)
- Liturgy and Music (Teacher: The Rt. Rev. Paul V. Marshal)
- Leadership of Congregational Song (Teacher: Canon Mark Laubach)

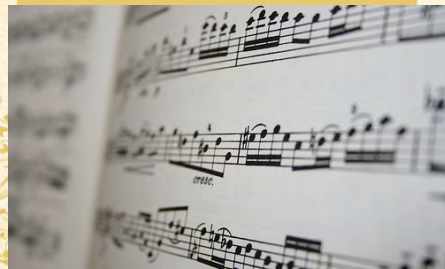
Fall-Spring 2012-2013

- Hymnody of the Christian Church
- Principles of Choral Leadership
- Teaching New Music to Congregations

Core Course (Both Years)

- Philosophy of Church Music

A list of textbooks will be sent to registered students.



2011-2012 Class Meeting Date

All Classes will be held on Saturdays at 9:00am-3:00pm. The locations will be dependent on the locations of those who are registered and will likely rotate weekly.

Morning Session:

Liturgy and Music
Leadership of Congregational Song:
Organ Track

Afternoon Session:

Lunch
Philosophy of Church Music
Recourses for an Effective Music Program

Certification

All Courses have specific requirements for completion and require study and practice. Students are given a Pass/Fail evaluation at the end of each course, and upon successfully completing requirements in all classes, will be awarded a Certificate in Church Music.

Tuition

The entire course program is \$500 per year + the cost of materials. An individual class is \$200. Inquire about the possibility of scholarships.



**For Information- Contact Rev. Hillary Raining,
LPM Coordinator**

Telephone 610-867-4741 x303

Facsimile 610-867-5206

Email Hillary@trinitybeth.org

The Diocesan Website www.diobeth.org

National LPM Website www.lpm-online.org

LPM

*The Leadership Program for
Musicians 2011-2012*

The Diocese of Bethlehem

*A National Teaching Ministry giving
Church Musicians an increased sense of
vocational awareness and the tools to
help congregations sing well and
participate actively in worship.*



A program of the Episcopal Church USA and the Evangelical Lutheran Church in America. LPM welcomes all persons and denominations interested in the Church's music and worship.

LPM in the Diocese of Bethlehem



Who? LPM is a national program for musicians, clergy and everyone interested in congregational music.

- Church musicians and choir members
- Worship, Liturgy and Music Committees
- Clergy
- Member of Congregations
- College Music Students

What? It is a national two-year continuing education program in church music.

Where? Locations will rotate and will be determined by the locations of the student body. We will be taking field trips to interesting musical sites as well as visiting each other's churches.

When? Classes will meet several times throughout the fall and the spring of 2011-2012 and again in the fall and spring of 2012-2013. The schedule can be found in this brochure as well as the times of classes.

Why? LPM's goals are to provide fundamental skills enabling participants to:

- Increase musical, pastoral, and leadership skills
- Teach and lead music in church
- Gain a better understanding of the music and liturgy of participating churches
- Be supported in their commitment to music and liturgy
- earn their denomination's Certificate in Church Music

Course Descriptions

Courses will be taught in two year intervals and are 11 classes in length. If you would like the accreditation, you must attend all classes in both years. You may also choose to attend all classes in one topic as detailed below.

2011-2012

Resources for Effective Music Ministry

A nuts and bolts curriculum introducing students to important resources for music ministry in the church. Includes tools for finding future resources as student's ministries grow.

Liturgy and Music: Foundations for Worship

This wide-ranging course surveys the rich liturgical traditions of the member churches and explores the church year, lectionary, and theology of each service with practical applications for the participants.

Philosophy of Church Music I

(Offered both years) This course will help affirm or redefine your thinking about the nature and role of music in worship with candid and sometimes contrary readings across the ages to inspire lively discussion.

Leadership of Congregational Song: Organ Track

Taught in concurrent tracks for organ and keyboard, voice, and guitar, this helpful course offers proven methods to improve the quality of congregational singing.

2012-2013

Hymnody of the Christian Church

A cross-denomination study of the major schools and styles of hymnody from early Greek and Latin to the current hymn explosion in England and the United States. Participants explore denominational hymns and new supplemental sources.

Principals of Choral Leadership

This course develops the student's skills as a leader of choral singing through session on choral conducting and voice training.

Teaching New Music to the Congregation

This course offers a systematic and successful way to introduce tomorrow's classics to a congregation.

Philosophy of Church Music II

(Offered Both years-see above.)

Registration

To register: Log onto www.diobeth.org and click on the "Register for Events" link. The registration deadline is September 5th. Checks can be made payable to the Diocese of Bethlehem with "LPM" in the memo line. Credit cards also accepted.

Cost: A non-refundable deposit of \$100 is due at time of registration. The cost will be \$500 (+ the cost of materials) for full 2011-12 year and \$200 for each individual class (see descriptions of each class above). Cost will include lunch.

Course Schedule

9/10/11

9/24/11

10/1/11

10/15/11

10/29/11

11/5/11

11/19/11

1/7/12

1/28/12

2/4/12

Final- 2/25/12

Make-up- 3/10/12